

Could Ocean-land Invasion be detected using Multi-temporal Images of Landsat?

¹Ayeni A. O., ²Cho M. A., ³Kuton M. P. and ³Chuckwu L. C.

¹Department of Geography, University of Lagos, Lagos, Nigeria.

²Earth Observation Group, Natural Resources & Environment, CSIR Pretoria, South-Africa.

³Department of Marine Sciences, University of Lagos, Lagos, Nigeria.

Corresponding author: E-mail - aayeni@unilag.edu.ng, ayenio2000@yahoo.com

Abstract

One of the most certain consequences of global sea level rise is ocean – land invasion and is likely to increase in the near future. The coastal rural fishing communities are mostly at risk of the invasion. To address the menace spatially through scientific research interventions, different coastal mapping techniques have been adopted over the years for different research problems e.g. shoreline erosion studies, barrier island migration, coastal erosion vulnerability assessment etc. The methods adopted varied from simple analysis, manual analysis of uncorrected topographic maps and aerial photo, digital interpretation of corrected multi-temporal images of low and high resolution images (e.g. Landsat, spot, Ikonos), and hyper-spectral images (e.g. AVIRIS, CASI, hyperion). In complimenting previous studies, this study provides answer to the question “Could ocean-land invasion be detected using multi-temporal images of Landsat?” Orthorectified Landsat remotely sense datasets of MSS (1984), TM (2000), combination of TM & ETM+ (2012) were acquired from GLS portal. The study demarcated 704km² around the Eastern Obolo LGA shoreline and processed it using ENVI maximum likelihood and change detection techniques. The classes invaded by ocean were not well revealed due to Landsat low resolution; nevertheless, between 1984 and 2012, ocean invaded about 1.39km² of the vegetal class. Ocean downturns which may result to serious invasion in future were also detected. This 28years demonstration shows that Multi-temporal Landsat Images are useful for ocean – land invasion study, but increased spatial resolution may be needed for detecting more subtle changes.

Key words: Coastal, erosion, land, Landsat and temporal

Introduction

One of the most certain consequences of global warming is an increase of global sea level. The resulting inundation from rising seas will heavily impact low-lying areas. The problems of widespread shoreline/coastal erosion have become a cause of global concern over the years (Moore *et al.*, 1999; Morton and McKenna, 1999; Thampanya *et al.*, 2006). In Sub-Saharan Africa, the problem of coastal erosion is attributed to various possible factors including change of storm climate/ storm surges, sediment starvation, glaciation or orogenic cycles, tsunamis, sea level rise, and probably human interference/anthropogenic activities (Carter, 1988; Zhang *et al.*, 2004; Lee *et al.*, 2005; Morton *et al.*, 2005; Nouri *et al.*, 2005; Ferreira *et al.*, 2006; Zviely *et al.*, 2009; Ordu and Demir, 2009; Ceia *et al.*, 2010; Armah, 2011). Amongst the above factors, sea level rise and human interferences are the most plausible causes of current coastal erosion (Leatherman, 1991; Lantuit and Pollard, 2008) as there is no significant increase in storminess magnitude, sediment starvation, and tsunamis (WASA Group, 1998; Zhang *et al.*, 2000; Zhang *et al.*, 2004). Therefore, as sea level rises, the high water line will migrate landward in proportion to the slope of the coastal area (Zhang *et al.*, 2004). The impact becomes severe in the low-lying areas where slope is very gradual as the case of Eastern Obolo shoreline area of Southeastern, Nigeria. An increase in the rate

of sea level rise much beyond a few mm per year in such areas can result to a disastrous ocean invasion over nearby community lands. Globally, not less than 100 million persons live in areas within one meter of mean sea level and are at high risk in the coming decades (Zhang et al., 2004).

With changes occurring over different time scales and increasing population in coastal areas, the study of coastal erosion has become a more dynamic issue in scientific research domains, but remains difficult (May et al., 1982; Dolan et al., 1980; Moore, 2000; Armah et al., 2010). As a result, the problem is becoming more complex and unbearable to most shoreline communities. In Nigeria coastal environment especially the Eastern Obolo shoreline area, the problem is severe with serious damage to settlements and sensitive ecosystems.

Therefore, it is very important to take appropriate measures against the sudden and potentially dangerous rises in sea level and ocean invasion hazards (Carter, 1988; Ferreira et al., 2006). The measures should not be limited to reducing the potential effects of the event and reducing the risk of the coastal hazards but also to increasing the vulnerable communities' ability to adapt to the effects of the coastal hazards (Klein et al., 2001; Nicholas and Klein, 2003; Thampanya et al., 2006; Ferreira et al., 2006). These measures are necessary as adaptation mechanisms to withstand short and long-term changes induced by sea level rise, extreme events, and anthropogenic activities etc (Armah, 2011). For ocean disaster preparedness, coastal mapping is also important in order to establish baseline data and for monitoring future trends of shoreline movement (Pilkey and Neal, 1988; Finkl, 1994, Ferreira et al., 2006).

Coastal changes mapping techniques are many (El-Nahry and Khashaba, 2006; Dogan, 2007; Ordu and Demir, 2009; Barducci *et al.*, 2009; Monprapussorn et al., 2009) and varied from simple analysis of uncorrected aerial photos, manual interpretation, digital interpretation of corrected multi-temporal images of low and high resolution images (e.g. Landsat, spot) to hyper-spectral images (e.g. Hyperion). On the other hand, the tools for characterization and quantification of the changes also vary over space and time (Collins and Woodcock, 1996; Song et al., 2001; Rogan et al., 2002; Thieler et al., 2009; Bonyad, 2005; Dhaimat and Dhaisat, 2006). However, because remote sensing tools provide a synoptic view and multitemporal information, it has been noted as the most useful tool for classification and change detection over varying spatio-temporal scales (Carlson and Azofeifa, 1999; Guerschman et al., 2003; Dwivedi et al., 2005; Demers, 2005; Fan, et al., 2007; Reis, 2008; Rimal, 2011)

Various studies have been conducted and published on coastal erosion/shoreline mapping using these remote sensing tools but most of the studies addressed mainly the spatial coverage of the vulnerable areas (Yaw and Merem, 2007; Kuenzer *et al.*, 2011). The authors infrequently address the invasion through a spatio-temporal change detection mapping. Therefore, the objective of this study is to provide answer to the question "Could ocean-land invasion be detected using multi-temporal images of Landsat? To answer this question with respect to Eastern Obolo coastal environment of Southeastern, Nigeria, we presents results of a remote sensing study on 28year patterns of ccean – land invasion variations using orthorectified Landsat images between 1984 and 2012.

Study Area

This study area lies between longitudes 7° 32' and 7° 50' East, and latitudes 4° 27' and 4° 33' in Akwa Ibom State, Nigeria. The area of demonstration covers about 704 km² on both land and water bodies (Fig. 1). Its shoreline is about 34.1km² with mangrove and shrubby vegetation. The area is characterized by poorly drained alluvial soil with much influence of Atlantic Ocean and creeks systems. During the high tide, the ocean overflows the shoreline and the village environment (Fig. 2).

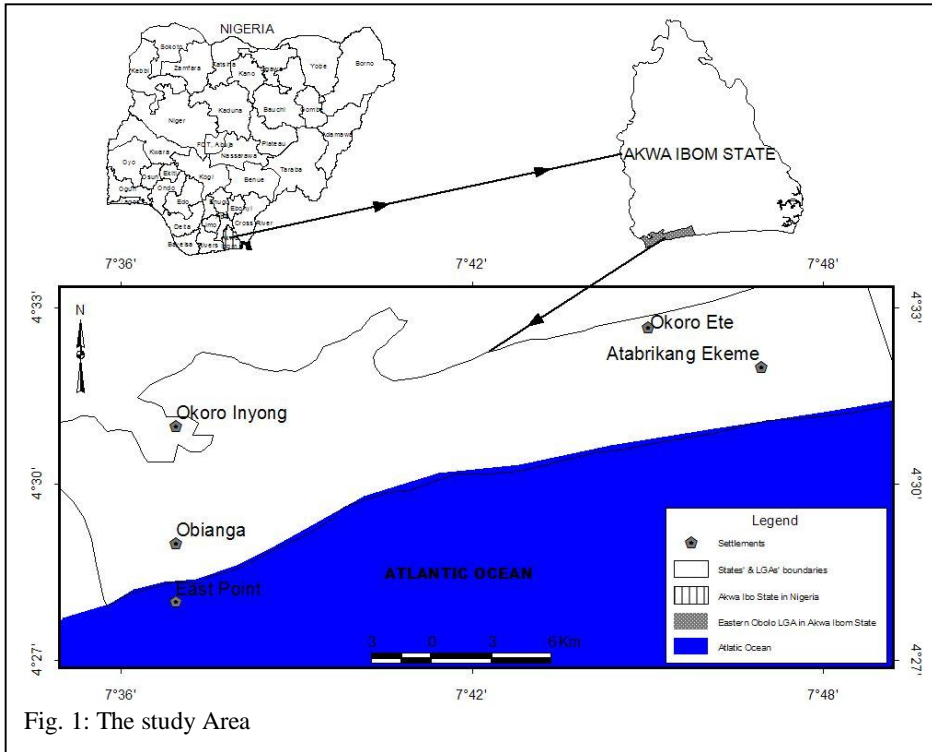


Fig. 1: The study Area



Fig. 2: Erosion invasion and downturn in 2011

Methods

The analysis time period was between December, 1984 and January 2012 with particular focus on recent years, 2005 and 2012. Orthorectified Landsat imagery including MSS (1984), TM (2000), combination of TM & ETM+ (2005 & 2012) were acquired from Global Land System (GLS) portal (Table 1).

Table 1: Landsat Images Scene Identifier

S/N	Paths	Rows	Dates & Years of Acquisition	Landsat Scene Identifier
1	188	057	13/12/1984	LM51880571984348AAA03
2	188	057	07/01/1991	LT41880571991007XXX03
3	188	057	13/01/2005	LE71880572005013ASN00
4	188	057	01/01/2012	LE71880572012001ASN00

Source: <http://glovis.usgs.gov>

Since the area falls within one path and row, the image for each time T year was downloaded and imported into ENVI software (an image processing software) for bands re-ordering and layer stacked. Approximately, 704km² (about 33.79km by 20.85 km) around the shoreline was masked out from each stacked part and row image using the region of interest (ROI) in ENVI. Subsequently, maximum likelihood (MLH) classification was used to classify the subset image into vegetation, built up, sand bar, ocean, and creek. Based on the field experience and knowledge of the area by the first author of this study (Fig. 2), and in conjunction with high resolution Google earth imagery (3) and true colour composite images (Fig. 4), pure pixels for the various land cover types were selected for training and validation of the MLH classifier.

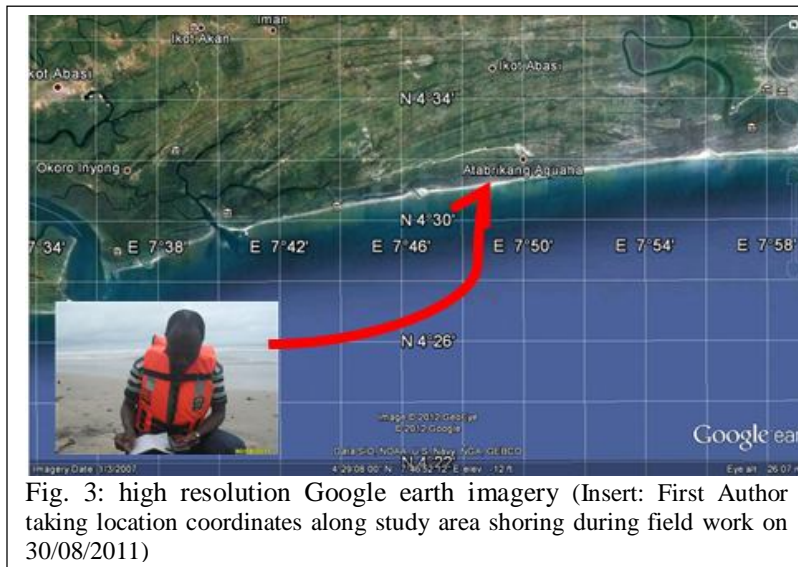


Fig. 3: high resolution Google earth imagery (Insert: First Author taking location coordinates along study area shoring during field work on 30/08/2011)

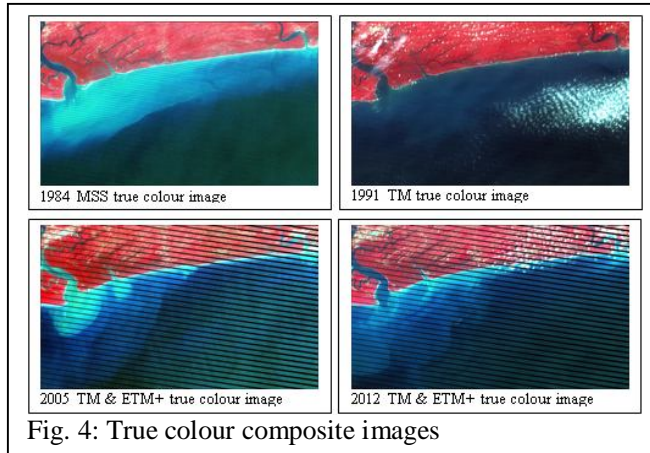


Fig. 4: True colour composite images

The 2005 and 2012 Landsat images are characterized by missing strips. Because of this, the classified images were exported into Erdas Imagine where they were corrected using re-code tool. Subsequently, all classified images were re-imported to the ENVI environment for change detection analysis and interpretation. The change detection matrix for the time period between 1984 and 2012 was produced using ENVI change detection statistics.

Results and Discussion

Change occurred more along shoreline segments between 1991 and 2005, and between 2005 and 2012 than in the 1984 and 1991 (Fig. 5a through 5d).

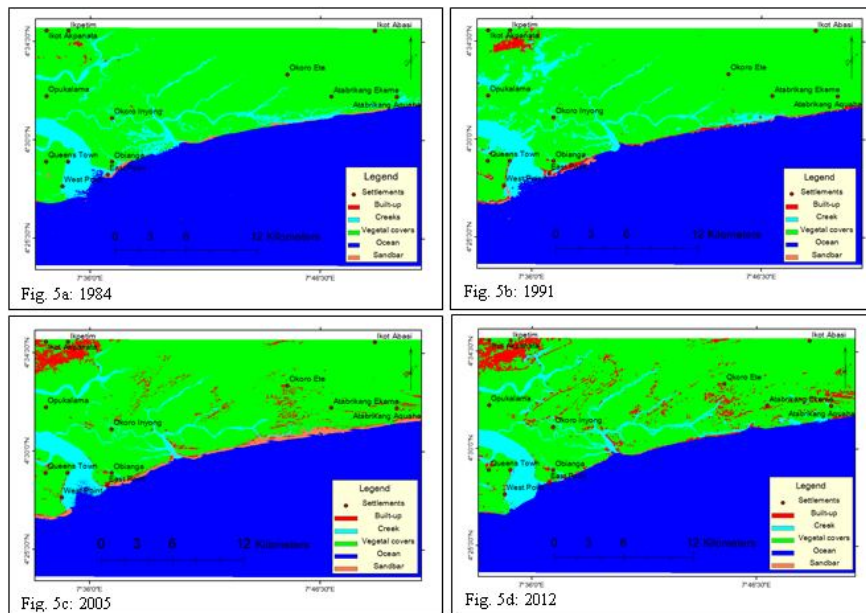


Fig. 5a through 5d: Time T classes

In Table 2, change matrices revealed that built-up showed the highest increase in area, difference of 7.09km² (i.e. an increase of 770.7% in 7years). Built-up losses 0.64km² (69.6%) out of 0.92km² baseline area covers in 1984. The classes with decreasing cover include

Hydrology for Disaster Management

Special Publication of the Nigerian Association of Hydrological Sciences, 2012

vegetation (21.99km²), sandbar (2.4km²), ocean (8.82km²), and creeks (19.91km²) with negative image differences of -0.19km² (0.06%), -0.03km² (13.3%), -6.81km²(1.87%), and -0.26km² (0.66%) respectively. High proportion (17.26km²) of vegetal covers changed to creeks within the 7years (between 1984 and 1991). Within the same period, 65.32% and 44.17% of sandbar and creeks changed to vegetal covers.

Table 2: Change matrix between 1984 and 1991(km²)

		1984											
		Vegetal		Built-up		Sandbar		Ocean		Creek		Class Total	
		Km ²	%	Km ²	%	Km ²	%	Km ²	%	Km ²	%	Km ²	%
1991	Vegetal	275.35	92.60	0.46	50.0	1.62	65.32	2.46	0.68	17.51	44.17	297.46	42.22
	Built-up	3.97	1.34	0.28	30.4	0.14	5.65	2.65	0.73	0.97	2.45	8.01	1.14
	Sandbar	0.05	0.02	0	0.0	0.08	3.23	1.84	0.51	0.21	0.53	2.18	0.31
	Ocean	0.71	0.24	0.07	7.6	0.01	0.40	355.52	97.58	1.22	3.08	357.53	50.75
	Creek	17.26	5.80	0.1	10.9	0.63	25.40	1.58	0.43	19.73	49.77	39.38	5.59
	Class Total	297.34	100	0.92	100	2.48	100	364.34	100	39.64	100	704.56	100
	Class Changes	21.99	7.4	0.64	69.6	2.4	96.77	8.82	2.42	19.91	50.23		
Image Difference	-0.19	0.06	7.09	770.7	-0.33	13.3	-6.81	1.87	-0.26	0.66			

As shown in Table 3, the areas well qualified for vegetal covers, ocean, and creeks classes between 1991 and 2005 changed by 16.46km² (5.53%), 4.24km² (1.19%), and 15.51km² (39.4%) with negative image differences of -0.67km² (0.22%), -2.84km² (0.79%), and -12.88km² (30.2%) respectively. Built-up and sandbar showed increased coverages of 4.87km² (60.8%) and 1.7km² (77.98%) with positive image differences of 9.68km² (120.9%) and 5.71km² (261.92%) respectively. The decrease in vegetal cover was highly reflected in the increase in built-up class while in the same period the analysis expressly stated that the decrease in ocean class mostly result in more accumulation of sandbar in 2005.

Table 3: Change matrix between 1991 and 2005 (km²)

		1991											
		Vegetal		Built-up		Sandbar		Ocean		Creek		Class Total	
		Km ²	%	Km ²	%	Km ²	%	Km ²	%	Km ²	%	Km ²	%
2005	Vegetal	281.01	94.5	2.67	33.3	0.12	5.50	0.24	0.07	12.75	32.4	296.8	42.1
	Built-up	13.82	4.7	3.74	39.2	0.29	13.3	0.06	0.02	0.38	0.97	17.69	2.51
	Sandbar	0.92	0.31	1.65	20.6	0.48	22.0	3.34	0.93	1.5	3.81	7.89	1.12
	Ocean	0.21	0.07	0.09	1.12	0.22	10.1	353.3	98.8	0.88	2.24	354.7	50.3
	Creek	1.5	0.50	0.46	5.74	1.07	49.1	0.6	0.17	23.86	60.6	27.49	3.90
	Class Total	297.46	100	8.01	100	2.18	100	357.5	100	39.37	100	704.56	100
	Class Changes	16.46	5.53	4.87	60.8	1.7	77.98	4.24	1.19	15.51	39.4		
Image Difference	-0.67	0.22	9.68	120.9	5.71	261.92	-2.84	0.79	-12.88	30.2			

The LULC change detection results are summarized for the years 2005 and 2012 in Table 4. The results show that negative changes have occurred in vegetal covers class and sandbar classes. Within the period vegetal covers and sandbar decreased by 21.82km² (7.35%) and 7.57km² (95.94%) commensurate with image differences of -13.18km² (4.44%) and -6.7km²

Hydrology for Disaster Management

Special Publication of the Nigerian Association of Hydrological Sciences, 2012

(84.91%) respectively. On the other hand built-up, ocean, and creeks fetched increase of 6.5km² (36.74%), 2.19km² (0.62%), and 2.01km² (7.31%) with corresponding positive image differences of 8.31km² (46.97%), 2.98km² (0.84%), and 8.59km² (31.25%). The rate of ocean invasion and accretion was higher over sandbar along the shoreline.

Table 4: Change matrix between 2005 and 2012 (km²)

		2005											
		Vegetal		Built-up		Sandbar		Ocean		Creek		Class Total	
		Km ²	%	Km ²	%	Km ²	%	Km ²	%	Km ²	%	Km ²	%
2012	Vegetal	274.97	92.65	6.05	34.20	1.32	16.73	0.11	0.03	1.16	4.22	283.61	40.25
	Built-up	12.92	4.35	11.19	63.26	1.66	21.04	0.04	0.01	0.19	0.69	26	3.69
	Sandbar	0.79	0.27	0.06	0.34	0.32	4.06	0.02	0.01	0	0.00	1.19	0.17
	Ocean	0.47	0.16	0.16	0.90	3.88	49.18	352.51	99.38	0.66	2.40	357.68	50.77
	Creek	7.64	2.57	0.23	1.30	0.71	9.00	2.02	0.57	25.48	92.69	36.08	5.12
	Class Total	296.79	100	17.69	100	7.89	100	354.7	100	27.49	100	704.56	100
	Class Changes	21.82	7.35	6.5	36.74	7.57	95.94	2.19	0.62	2.01	7.31		
	Image Difference	-13.18	4.44	8.31	46.97	-6.7	84.91	2.98	0.84	8.59	31.25		

The ocean – land invasion between 1984 and 2012 in the coastline of Eastern Obolo LGA of Akwa Ibom State Nigeria was analyzed by maximum likelihood classification technique. The changes detected over time were due to ocean downturn resulting from sea level rise. Sea level rise plays crucial role by elevating water level over low-lying areas during coastal storms and increases long-term erosion rates (French et al., 1995; Nicholls and Mimura, 1998; Popoola et al., 2011). The class that consistently changed negatively in the course of time was vegetation. The study observed intense change in vegetation class between 1984 and 2012 with -0.19km² between 1984 and 1991, -0.67km² between 1991 and 2005, and -13.18km² between 2005 and 2012. Nonetheless, the change in the vegetal covers seems low between 1984 and 1991 (0.06%). In addition, the vegetal class in the form of shrubs and grasses along the shoreline were mainly invaded by ocean erosion in 2012 (Fig. 2). It is because of the fact that the area is a low-lying terrain (between 0 and 50m above sea level) which allows easy passages of coastal erosion (Reis, 2008). Erosion of sandbar was highly noted in the 1991 and 2005 change detection analysis. Sandbar increases from 2.18km² to 7.89km² in 1991 and 2005 respectively (Fig. 5b; Fig. 5c, and table 3). The changes from sandbar to ocean also affected the built-up in the area. The 2005 and 2012 change detection analysis revealed reclamation of sandbar by the ocean (Fig. 5c; Fig. 5d, and table 4). These may involve redistribution process of sand from the ocean to the shoreline and back to the ocean which commonly occurs during coastal storms. These storms are accompanied by a temporary increase of local sea level that aids energetic storm waves to move ocean sands higher and deposit it in the ocean adjacent low-lying areas (Zhang et al., 2000; Zhang et al., 2004). There are changes to built-up class from all kinds of classes of lands, but the invasion from ocean was relatively less. Similarly, because of the nature of creeks in the coastal areas, the creeks class increases and decreases over time. The creek areas changed into built-up areas were noted to have originated from the creeks recession over time. This fluctuation may also have impacts on water transportation in the area particularly during the high tide (Baloglu et al., 2003).

Conclusion

The study shows the potential of using Landsat multi-temporal images for ocean-land invasion mapping that is necessary for coastal erosion adaptation mechanisms. The classification adopted and its results produce an overall accuracy that fulfills the coastal erosion threshold study. It was seen that the change were mostly occurred along the shoreline and around the creeks low-lying areas, although, the rate of ocean/shoreline invasion varied along the coastline between 1984 and 2012. For instance, the vegetation areas in the delineated image had a noticeable negative change as depicted in matrix analyses. The high changes in vegetation within the 28 years were caused mainly by the positive changes in built-up areas. Ocean invasion had its impact in the area but within the range of shoreline and creeks point of discharge.

From the maximum likelihood classification and change detection results, more devastated future Ocean – land invasion should be expected if proper shoreline planning and management (shoreline mangrove conservation; shoreline barrier protection) are not well channeled in the area. This study therefore encourages more application of remote sensing techniques in coastal erosion research as demonstrated in this study to open up more comparative research in coastal erosion, landuse/landcover, and global change impacts on shoreline communities. More high resolution earth observation datasets (e.g. spot) and hyper-spectral images (e.g. Hyperion) should be adopted for such research. This is because change information from high resolution images is more effective and accurate in change detection study.

References

- Addo, K. A., M. Walkden and J.P. Mills (2008): Detection, measurement and prediction of shoreline recession in Accra, Ghana, *ISPRS Journal of Photogrammetry & Remote Sensing* 63: 543–558
- Allen, T. R., G. F. Oertel and P. A. Gares (2012): Mapping coastal morphodynamics with geospatial techniques, Cape Henry, Virginia, USA, *Geomorphology* 137: 138–149
- Armah F. A. (2011): GIS-based Assessment of Short Term Shoreline Changes in the Coastal Erosion-Sensitive Zone of Accra, Ghana, *Research Journal of Environmental Sciences*, 5: 643-654.
- Armah, F.A., D.O. Yawson, A.N. Pappoe and E.K. Afrifa (2010): Participation and sustainable management of coastal lagoon ecosystems: The case of the Fosu lagoon in Ghana, *Sustainability*, 2: 383-399.
- Baloglu, R.B., E. Steel, O. Kul and R. Long (2003): Transport in rural areas of the Eastern Black Sea Region. Transportation, residential problems and solutions Symposium 2003, 18-20 December, Trabzon, Turkey (in Turkish)
- Barducci, A., D. Guzzi, P. Marcoionni and I. Pippi (2009): Aerospace wetland monitoring by hyperspectral imaging sensors: A case study in the coastal zone of San Rossore Natural Park, *Journal of Environmental Management* 90: 2278– 2286
- Bonyad, A. (2005): Multitemporal satellite image database classification for land covers inventory and mapping, *J. Applied Sci.*, 5: 834-837.

Hydrology for Disaster Management

Special Publication of the Nigerian Association of Hydrological Sciences, 2012

- Bwangoy, J. B., M. C. Hansen, D. P. Roy, G. De Grandi and C. O. Justice (2010): Wetland mapping in the Congo Basin using optical and radar remotely sensed data and derived topographical indices, *Remote Sensing of Environment* 114: 73–86
- Carlson, T. N. and S. G. A Azofeifa (1999): Satellite Remote Sensing of land Use changes in and around San Jose´, Costa Rica, *Remote Sensing of Environment*, 70, 247–256.
- Carter, R.W. G. (1988): Coastal environments. London: Academic Press Limited, 617 pp.
- Ceia, F.R., J. Patrício, J. C. Marques and J. A. Dias (2010): Coastal vulnerability in barrier islands: The high risk areas of the Ria Formosa (Portugal) system, *Ocean & Coastal Management* 53: 478-486
- Chen W. W. and H. K. Chang (2009): Estimation of shoreline position and change from satellite images considering tidal variation, *Estuarine, Coastal and Shelf Science* 84: 54–60
- Chust G., I. Galparsoro, A. Borja, J. Franco and A. Uriarte (2008): Coastal and estuarine habitat mapping, using LIDAR height and intensity and multi-spectral imagery, *Estuarine, Coastal and Shelf Science* 78: 633-643
- Collins, J. B. and C. E. Woodcock (1996): An assessment of several linear change detection techniques for mapping forest mortality using multitemporal Landsat TM data, *Remote Sensing of Environment*, 56, 66– 77.
- Coyne, M.A., C. H. Fletcher and B. M. Richmond, (1999): Mapping coastal erosion and hazard areas in Hawaii: observations and errors, *J. Coast. Res.* 28: 171–184.
- Crowell, M., & S. P. Leatherman, (1999): Coastal erosion mapping and management, *Journal of Coastal Research, Special Issue No. 28*, 196 pp.
- Demers, M. N. (2005): Fundamentals of Geographic Information Systems, John Wiley&Sons, Inc., Newyork, USA.
- Dhaimat, O. and S. Dhaisat (2006): Study of sharp-cut decrease of dead sea, *J. Applied Sci.*, 6: 211-216.
- Dogan, H.M., (2007): Climatic portrayal of Tokat province in Turkey: Developing climatic surfaces by using LOCCLIM and GIS, *J. Boil. Sci.*, 7: 1060-1071.
- El-Nahry, A.H. and H.E. Khashaba (2006): Land suitability modeling of natural vegetation using integrated remote sensing and GIS techniques: A case study, *J. Applied Sci.*, 6: 51-56.
- Dolan, R., B. P. Hayden, P. May and S. May (1980): The reliability of shoreline change measurements from aerial photo-graphs, *Shore and Beach*, 48(4): 22-29.
- Dwivedi, R.S., K.Sreenivas and K.V. Ramana (2005): Land-use/land-cover change analysis in part of Ethiopia using Landsat Thematic Mapper data. *International Journal of Remote Sensing*, 26(7): 1285-1287.
- Fan, F., Q.Weng and Y. Wang (2007): Land use land cover change in Guangzhou, China, from 1998 to 2003, based on Landsat TM/ETM+ imagery, *Sensors*, 7, 1323-1342.
- Ferreira, O., T. Garcia, A. Matias, R. Taborda and J. A. Dias (2006): An integrated method for the determination of set-back lines for coastal erosion hazards on sandy shores, *Continental Shelf Research* 26: 1030–1044
- Finkl, C. (1994): Disaster mitigation in the South Atlantic Coastal Zone (SACZ): a prodrome for mapping hazards and coastal land systems using the example of urban subtropical southeastern Florida. *Journal of Coastal Research* SI 12, 339– 366.

- French G. T., L. F. Awosika and C. E. Ibe (1995): Sea-level rise in Nigeria: potential impacts and consequences, *J Coast Res Spec Iss* 14:224–242
- Guerschman J.P., J. M. Paruelo, C. D. Bela, M. C. Giallorenzi and F. Pacin (2003): Land cover classification in the Argentine Pampas using multi-temporal Landsat TM data, *International Journal of Remote Sensing*, 24, 3381–3402.
<http://glovis.usgs.gov/> (U.S. Department of the Interior | U.S. Geological Survey)
- Itah A. Y. And C. E. Akpan (2005): Potability of Drinking Water in Oil Impacted Community in Southern Nigeria, *J. Appl. Sci. Environ. Mgt.*, 9 (1): 135 - 141
- Klein, R. J. T., R. J. Nicholls, S. Ragoonadeu, M. Capobianco, J. Aston and E. N. Buckley (2001): Technological options for adaptation to climate change in coastal zones, *Journal of Coastal Research* 17 (3): 531–543.
- Kuenzer C., A. Bluemel, S. Gebhardt, T. V. Quoc and S. Dech (2011): Remote Sensing of Mangrove Ecosystems: A Review, *Remote Sens.*, 3, 878-928
- Kumar, A., A.C. Narayana and K.S. Jayappa (2010): Shoreline changes and morphology of spits along southern Karnataka, west coast of India: A remote sensing and statistics-based approach, *Geomorphology* 120: 133–152
- Kunte, P. D and B. G. Wagle (1994): Analysis of space-borne data for coastal zone information extraction of Goa coast, India, *Ocean & Coastal management*, 22(3): 187-200
- Lantuit, H. and W.H. Pollard (2008): Fifty years of coastal erosion and retrogressive thaw slump activity Herschel Island, southern Beaufort Sea, Yukon Territory, Canada, *Geomorphology* 95: 84–102
- Leatherman, S. P. (1991): Modeling Shore Response to Sea-Level Rise on Sedimentary Coasts, *Prog. Phys. Geog.*, 14, 447–464.
- Lee, T. M. (2005): Monitoring the dynamics of coastal vegetation in Southwestern Taiwan, *Environ. Monitoring Assessment*, 111: 307-323.
- Maiti, S. and A. K. Bhattacharya (2009): Shoreline change analysis and its application to prediction: A remote sensing and statistics based approach, *Marine Geology* 257: 11–23
- May, S. K., W. H. Kimball, N. Grady and R. Dolan (1982): CEIS: The Coastal Erosion Information System, *Shore and Beach*, 50: 19-26.
- Monprapussorn, S., D. Thaitakoo, D.J. Watts and R. Banomyong (2009): Multi criteria decision analysis and geographic information system framework for hazardous waste transport sustainability, *J. Applied Sci.*, 9: 268-277.
- Moore, L. J., B. T. Benumof, and G. B.: Griggs (1999): Coastal Erosion Hazards in Santa Cruz and San Diego Counties, California, *J. Coastal Research*, 28: 121– 139.
- Moore, L. J. (2000): Shoreline mapping techniques, *Journal of Coastal Research*, 16(1): 111-124.
- Morton, R. A. and K. K. McKenna (1999): Analysis and Projection of Erosion Hazard Areas in Brazoria and Galveston Counties, Texas', *J. Coastal Research*, 28: 106–120
- Morton, R. A., T. Miller and L. Moore (2005): Historical shoreline changes along the U.S. Gulf of Mexico: A summary of recent shoreline comparisons and analyses, *J. Coastal Res.*, 21: 704-709.
- Nouri, J., A. Gharagozlou, A. Nourifard and S.M. Tehrani (2005): Environmental impact assessment of the largest man-made lake of Iran, *Pak. J. Biol. Sci.*, 8: 1672-1677.

Hydrology for Disaster Management

Special Publication of the Nigerian Association of Hydrological Sciences, 2012

- Nicholls, R. J. and N. Mimura (1998): Regional issues raised by sea-level rise and their policy implications, *Clim Res*, 11: 5–18
- Nicholls, R. J. and R. J. T. Klein (2003): Climate change and coastal management on Europe's coast. EVA Working Paper no. 3, Potsdam Institute for Climate Impact Research, Germany.
- Ordu, S. and A. Demir (2009): Determination of land data of ergene basin (Turkey) by planning geographic information systems, *J. Environ. Sci. Technol.*, 2: 80-87.
- Pilkey, O.H. and W. Neal (1988): Coastal geologic hazards. In: Sheridan, R. E. and J. A. Grow, (Eds.), *The Atlantic Continental Margin: USA, The Geology of North America*, vol. 1–2:549–556.
- Popoola O.O., V. J. Abbott and G. Glegg (2011): Impact of Sea Level Rise: Barrier Coast, Nigeria, IAIA11 Conference Proceedings' *Impact Assessment and Responsible Development for Infrastructure, Business and Industry*, 31st Annual Meeting of the International Association for Impact Assessment 28 May- 4 June 2011, Centro de Convenciones, Puebla - Mexico
- Reis, S. (2008): Analyzing Land Use/Land Cover Changes Using Remote Sensing and GIS in Rize, North-East Turkey, *Sensors*, 8: 6188-6202
- Rimal, B. (2011): Application of Remote Sensing and GIS, Land Use/Land Cover Change in Kathmandu Metropolitan City, Nepal. *Journal of Theoretical and Applied Information Technology*, 2005 -2011: 80 - 86
- Rogan, J., Franklin, J., & Roberts, D. A. (2002): A comparison of methods for monitoring multitemporal vegetation change using Thematic Mapper imagery, *Remote Sensing of Environment*, 80, 143– 156.
- Saalovara, K., S. Thessler, R. N. Malik and H. Tuomisto, (2005): Classification of Amazonian primary rain forest vegetation using Landsat ETM+ satellite imagery, *Remote Sensing of Environment*, 97, 39–51.
- Song, C., C. E. Woodcock, K. C. Seto, M. P. Lenney and S. A. Macomber (2001): Classification and change detection using Landsat TM data: When and how to correct atmospheric effects? *Remote Sensing of Environment*, 75: 230– 244.
- Thampanya U., J.E. Vermaat, S. Sinsakul and N. Panapitukkul (2006): Coastal erosion and mangrove progradation of Southern Thailand, *Estuarine, Coastal and Shelf Science* 68: 75-85
- Thieler, E. R., E. A. Himmelstoss, J. L. Zichichi and E. Ayhan (2009): Digital Shoreline Analysis System (DSAS) version 4.0 An ArcGIS extension for calculating shoreline changes. U.S. Geological Survey Open-File Report 2008-1278.
- WASA Group (1998): Changing Waves and Storms in the Northeast Atlantic, *Bull. Amer. Meteorol. Soc.*, 79: 741–761.
- Yang, B., M. Madden, J. Kim and T. R. Jordan (2012): Geospatial analysis of Barrier Island beach availability to tourists, *Tourism Management* 33: 840-854
- Yaw A. T. and E. C. Merem (2007): Using Remote Sensing and GIS in the Analysis of Ecosystem Decline along the River Niger Basin: The Case of Mali and Niger, *Int. J. Environ. Res. Public Health*, 4(2), 173-184
- Zhang, K., B. C. Douglas and S. P. Leatherman (2004): Global warming and Coastal Erosion, *Climatic Change*, 64: 41–58.

Hydrology for Disaster Management

Special Publication of the Nigerian Association of Hydrological Sciences, 2012

- Zhang, K., B. C. Douglas and S. P. Leatherman, (2000): Twentieth Century Storm Activity along the U.S. East Coast, *J. Climate*, 13: 1748–1761.
- Zhou, G., and M. Xie (2009): Coastal 3-D morphological change analysis using LiDAR series data: a case study of Assateague Island National Seashore, *Journal of Coastal Research* 25(2): 435–447.
- Zviely, D., E. Kit, B. Rosen, E. Galili and M. Klein (2009): Shoreline migration and beach-near shore sand balance over the last 200 years in Haifa Bay (SE Mediterranean). Haifa Bay, Israel, *Geo-Marine Lett.*, 29: 93-110.